


Explorations &

By Martha Sheriff

Shadowed Letters

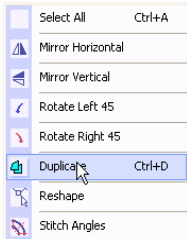
Applicable for all levels of Explorations


1. Click on New Project. Type in a name of your choosing.

2. Click on the Lettering Mode 
3. Type in the letters you want to use and set them exactly as you want them to be for the final letters, arced, enveloped, or whatever you want. Click on the Threads Icon and select the thread color you want the “shadow” to be.



4. Click on Edit  and Duplicate.



5. While the duplicated image is still selected on the workscreen, click on the Threads 

mode and change this to a different color in the Thread Chooser. This color will be the “top” letters to be

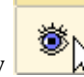
6. With the top letters still selected, use the arrow keys on the computer to fine tune the placement to get the shadow in the correct position. Experiment a bit with this to see if you want the shadow to be on the

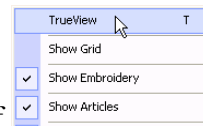
left or the right or above or below the top letters.

7. After the correct position is achieved, save your project. This will save you time if you change your mind later.
8. Select the first set of lettering (which is the shadow) and click the Group tool and click Ungroup. If you have trouble knowing which set of letters you have selected,

View



Click on View  and make sure True



View is turned off (no checkmark). NOTE: You normally would not ungroup lettering because after it is ungrouped it is then just groups of stitches. The software no longer considers this “lettering” and you cannot change it as you normally would, thus the reason for saving in Step 7.

9. After you have the first set of letters ungrouped, click on the top set of Letters which are still Letters and click on Tools and click on Remove Overlaps.
10. You now have shadowed letters.



11. Save this under a different name if you think you might want to change it later. That way you haven't changed the original you saved in Step 7.