

Minkee Mayhem Baby Mobile

by Tamara Fox

Customize your nursery by upgrading a used mobile



Let's be real, in addition to simply adorable, babies can be very expensive. Use this idea to customize your nursery while saving a few pennies in the process.

Supplies:

- Assorted fabrics for covering mobile (I used Minkee®)
- Fabric for making four Minkee® Mayhem stuffed animals
- Embellishments for Minkee® Mayhem stuffed animals (optional)
- Used baby mobile, pick one up at the thrift store or refresh one that you used for an older child

©2010 OESD, LLC. All rights reserved.

Make Minkee® Mayhem stuffed animals:

- Make four stuffed animals following the instructions included with the Minkee® Mayhem embroidery collection with one simple variation; enlarge the files to about 6" tall.
- Embellish the animals if desired. Please note that if you embellish them you should not later remove the animals from the mobile and give to a child as plush toys since embellishments may create a choking hazard. **(Photo 01)**
- Using a large needle, run a piece of ribbon through the back of the head of the animals and tie a knot 5" up from the animal. **(Photo 02)** Note that your mobile may be longer or shorter than mine and may look better with the animals hanging higher or lower than 5". Adjust as necessary.



Photo 01



Decorate Canopy Arms:

- Remove any plush items hanging from existing mobile.
- Wipe down mobile with wet rag to clean, especially if using a used mobile.
- Remove the canopy section of the mobile and measure length of the "arms" of the canopy. Multiply this number by 1.5 and write down as length. (Mine were 5" so I wrote down 7.5")
- Using a fabric measuring tape, measure the distance around one of the "arms". Double this measurement, then add 1" and write this down as the width. (Mine were 1", so I wrote down 3".)
- Cut four pieces of fabric the length and width as you marked them. (Mine were 7.5" x 3".)
- Fold the short ends of each rectangle 1/4" to the wrong side and stitch to create a hem. **(Photo 03)**



Photo 02



Photo 03



Photo 04

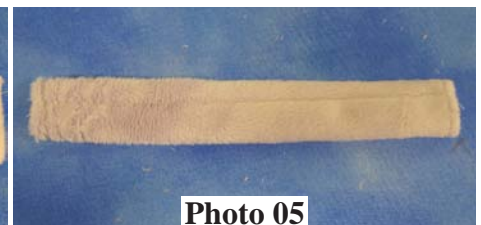


Photo 05

- With right sides together, fold the rectangle in half and stitch into a tube using a 1/2" seam. Trim raw edge 1/4" from seam. **(Photo 04)**
- Turn tube right side out. **(Photo 05)**
- Slip tubes over arms of canopy and add a dab of hot glue to outside end to hold fabric in place. **(Photo 06)**

Decorate Main Arm:

- Measure length of the main arm. Multiply this number by 1.5 and write down as length. (Mine was 25", so I wrote down 37.5".)

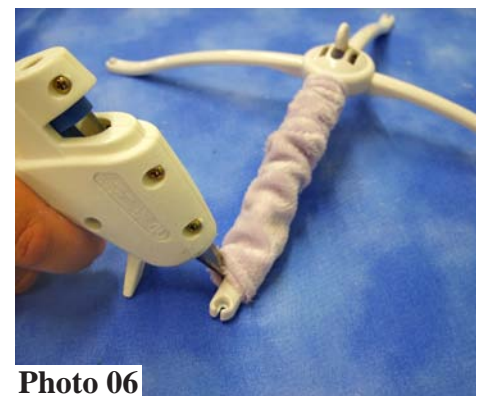


Photo 06

- Using a fabric measuring tape, measure the distance around the main arm. If yours tapers as mine does, measure the fattest part. Double this measurement and write this down as the width. (Mine was 5", so I wrote down 10".) **(Photo 07)**
- Cut a piece of fabric the length and width as you marked them. (Mine was 37.5" x 10".)
- Fold the short ends of the rectangle ¼" to the wrong side and stitch to create a hem on both ends just as you did when making the canopy arm covers.
- With right sides together, fold the rectangle in half and pin along the long edge. Carefully slip tube over arm and to create the taper, pin in a few places. Pin parallel to the arm about ¼" from the bar. Don't pin too close as A) you don't want the sleeve too tight and B) you want to be able to remove the sleeve. **(Photo 08)**
- Carefully remove sleeve from arm and lie flat on table. With a water soluble marker, draw a line along your parallel pins from the previous step. This will be your tapered seam line.



Photo 07

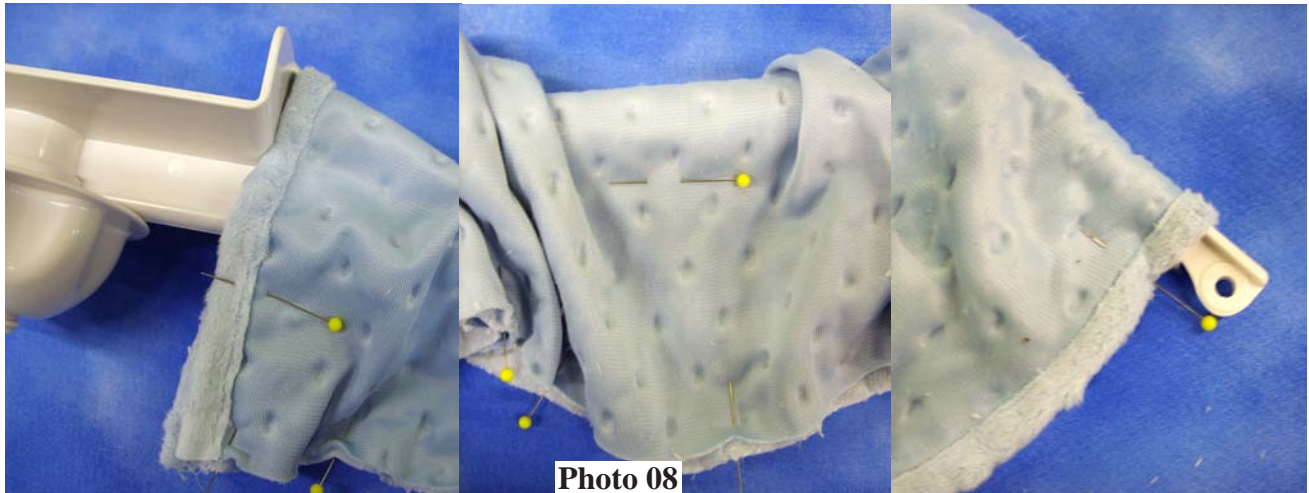


Photo 08

- Move pins from the edge of the fabric and instead pin along your seam line. **(Photo 09)**
- Stitch along drawn line. Trim excess fabric to ¼" from seam. **(Photo 10)**
- Turn tube right side out.
- Slip tube over arm and add a dab of hot glue to outside end to hold fabric in place just as you did when attaching sleeves to arms of canopy.

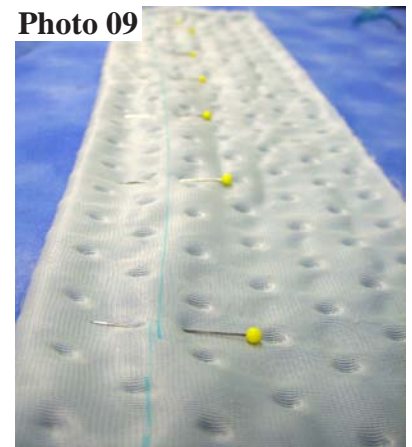


Photo 09



Photo 10

Finishing:

- Assemble mobile.
- Hang animals on canopy arms.
- Wrap a ribbon around the center of the canopy and tie a bow to the inside.

©2010 OESD, LLC. All rights reserved.